

# Gütermann

*ring a roses*



DE / EN

Premium Collection **NATURAL BEAUTY**



# Premium Collection **NATURAL BEAUTY**

## **Natürlich. Schön.**

Die Kollektion NATURAL BEAUTY von Gütermann ring a roses spielt mit dem, was uns ganz natürlich umgibt.


Klassische Blütenpracht, filigrane Blattmotive und zarte Knospenarrangements schmücken die modernen Prints. Als Tänzerin der Lüfte verleiht die Libelle den Dessins Eleganz und Leichtigkeit. Farbtöne von kräftiger Litschi, natürlichem Oliv- und Farngrün stehen im Kontrast mit Nachtblau, Granitgrau oder elegantem Weiß. Wo Flora und Fauna so trendig interpretiert werden, lassen sich die schönsten Hingucker kreieren.

## ***Natural. Beautiful.***

*The NATURAL BEAUTY collection from Gütermann ring a roses plays with the things that are all around us in Nature.*

*The classical magnificence of blossom, delicate leaf motifs and arrangements of tender buds decorate these modern prints. A dragonfly dancing in the wind brings elegance and airiness to the design. Shades from strong lychee, natural olive-green and fern-green contrast with midnight-blue, granite-grey and elegant white. This trendy interpretation of flora and fauna creates the loveliest eye-catching results.*





Ein perfektes Trio:  
Trendiges Blätter-Motiv in  
Kombination mit Unistoffen  
in Creme und Dunkelgrün.

*A perfect trio:  
trendy leaf motifs  
combined with plain fabrics  
in cream and dark green.*



Art. 647781 Col. 339



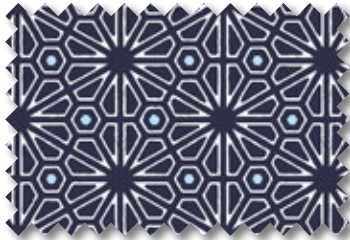
Art. 647782 Col. 339



Art. 647783 Col. 339



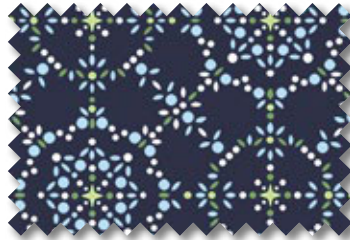
Art. 647784 Col. 339



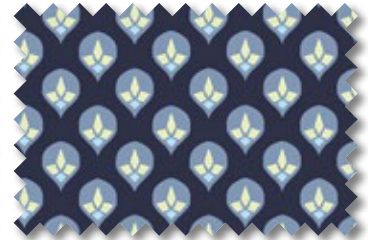
Art. 647785 Col. 339



Art. 647786 Col. 339



Art. 647787 Col. 339



Art. 647788 Col. 339



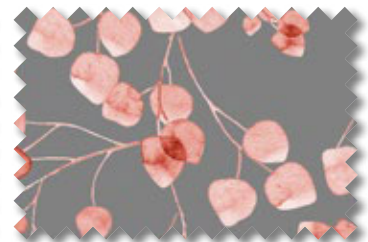
Art. 647781 Col. 984



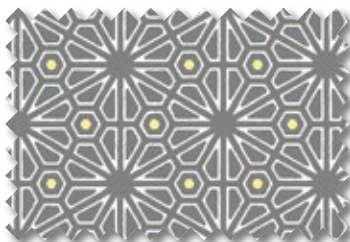
Art. 647782 Col. 800



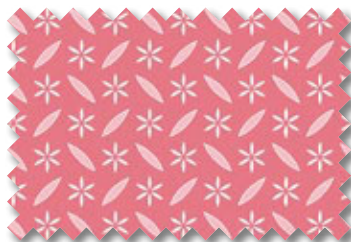
Art. 647783 Col. 40



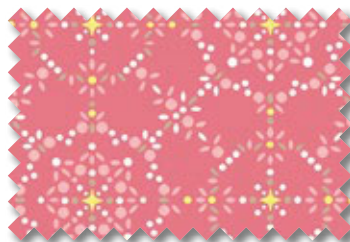
Art. 647784 Col. 40



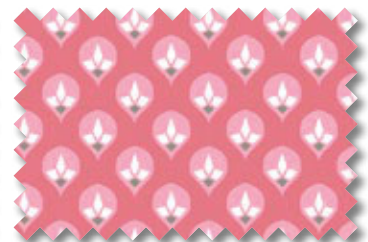
Art. 647785 Col. 40



Art. 647786 Col. 984



Art. 647787 Col. 984



Art. 647788 Col. 984



Art. 647781 Col. 800



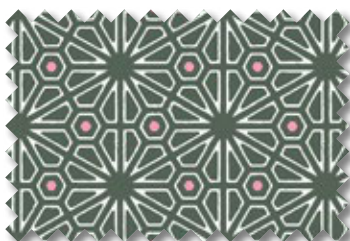
Art. 647782 Col. 296



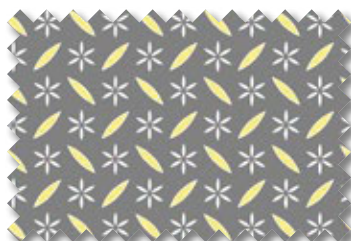
Art. 647783 Col. 296



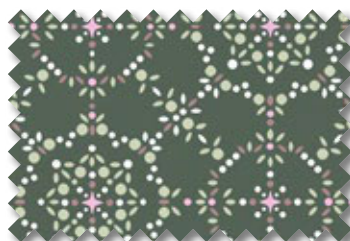
Art. 647784 Col. 800



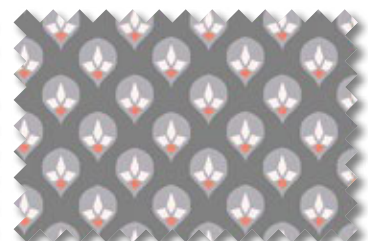
Art. 647785 Col. 296



Art. 647786 Col. 40




Art. 647787 Col. 296



Art. 647788 Col. 40

**Liefereinheit / Delivery unit** 1 Meter  
**Mindestbestellmenge / Minimum order quantity** 6 Meter  
**Lauf­länge Stoffballen / Bolt Size** 6 Meter  
**Breite / Width** 145 cm  
**Gewicht / Weight** 145 g/qm / 145 g/sqm

**Material / Material** 100% Baumwolle / 100% Cotton  
**Pflege / Care**   
**Zertifikat / Certificate** Oeko-Tex Standard 100  
**Herkunft / Origin** Made in Republic of Korea  
 Kleine Farbabweichungen vorbehalten.  
*Small shade variations may occur.*



# Premium Collection **NATURAL BEAUTY**



Art. 647781 Col. 984



Art. 647782 Col. 339



Art. 647781 Col. 339



Art. 647781 Col. 800



Art. 647782 Col. 800



Art. 647782 Col. 296



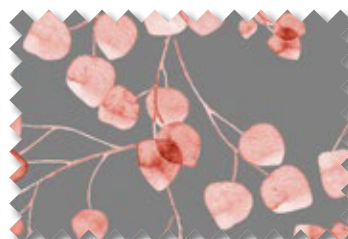
Art. 647784 Col. 800



Art. 647783 Col. 296



Art. 647784 Col. 339



Art. 647784 Col. 40




Art. 647783 Col. 339



Art. 647783 Col. 40

**Liefereinheit / Delivery unit** 1 Meter  
**Mindestbestellmenge / Minimum order quantity** 6 Meter  
**Lauflänge Stoffballen / Bolt Size** 6 Meter  
**Breite / Width** 145 cm  
**Gewicht / Weight** 145 g/qm / 145 g/sqm

**Material / Material** 100 % Baumwolle / 100 % Cotton  
**Pflege / Care**   
**Zertifikat / Certificate** Oeko-Tex Standard 100  
**Herkunft / Origin** Made in Republic of Korea  
 Kleine Farbabweichungen vorbehalten.  
 Small shade variations may occur.





# Fat Quarter Bundles

Perfekt abgestimmter Stoff-Mix für kleine Nähideen oder Patchwork-Projekte.

Die 5 Fat Quarter in den verschiedenen Dessins lassen sich einfach und schön miteinander kombinieren.

*Perfectly harmonised mixture of fabrics for small sewing ideas or patchwork projects.*

*The 5 Fat Quarter in different designs can be easily combined to create pretty effects.*

**Verkaufseinheit / Sales unit**

1 Stück / 1 piece

**Liefereinheit / Delivery unit**

1 Stück / 1 piece

**Inhalt / Contents**

5 Fat Quarter je 45 cm x 55 cm / 18" x 21"

5 Fat Quarter each 45 cm x 55 cm / 18" x 21"

**Maße / Dimensions**

110 x 40 x 120 mm

**Gewicht / Weight**

145 g/qm / 145 g/sqm

**Material / Material**

100% Baumwolle / 100% Cotton

**Pflege / Care**

30°C 30 30 30 P

**Zertifikat / Certificate**

Oeko-Tex Standard 100



Art. 646135 Col. 1



Art. 646135 Col. 2



Art. 646135 Col. 3



# Display Fat Quarter Bundles

Attraktives und kompaktes Display gefüllt mit 3 x 3 Fat Quarter Bundles aus der Gütermann ring a roses Premium Kollektion NATURAL BEAUTY.

*Attractive, compact display filled with 3 x 3 Fat Quarter Bundles from the Gütermann ring a roses NATURAL BEAUTY Premium Collection.*

**Art. / Art.**

645125 Col. 13

**Verkaufseinheit / Sales unit**

1 Display / display

**Liefereinheit / Delivery unit**

1 Display / display

**Inhalt / Contents**

9 Fat Quarter Bundles in 3 Farben /

9 Fat Quarter Bundles in 3 colours

**Maße / Dimensions**

376 x 114 x 121 mm





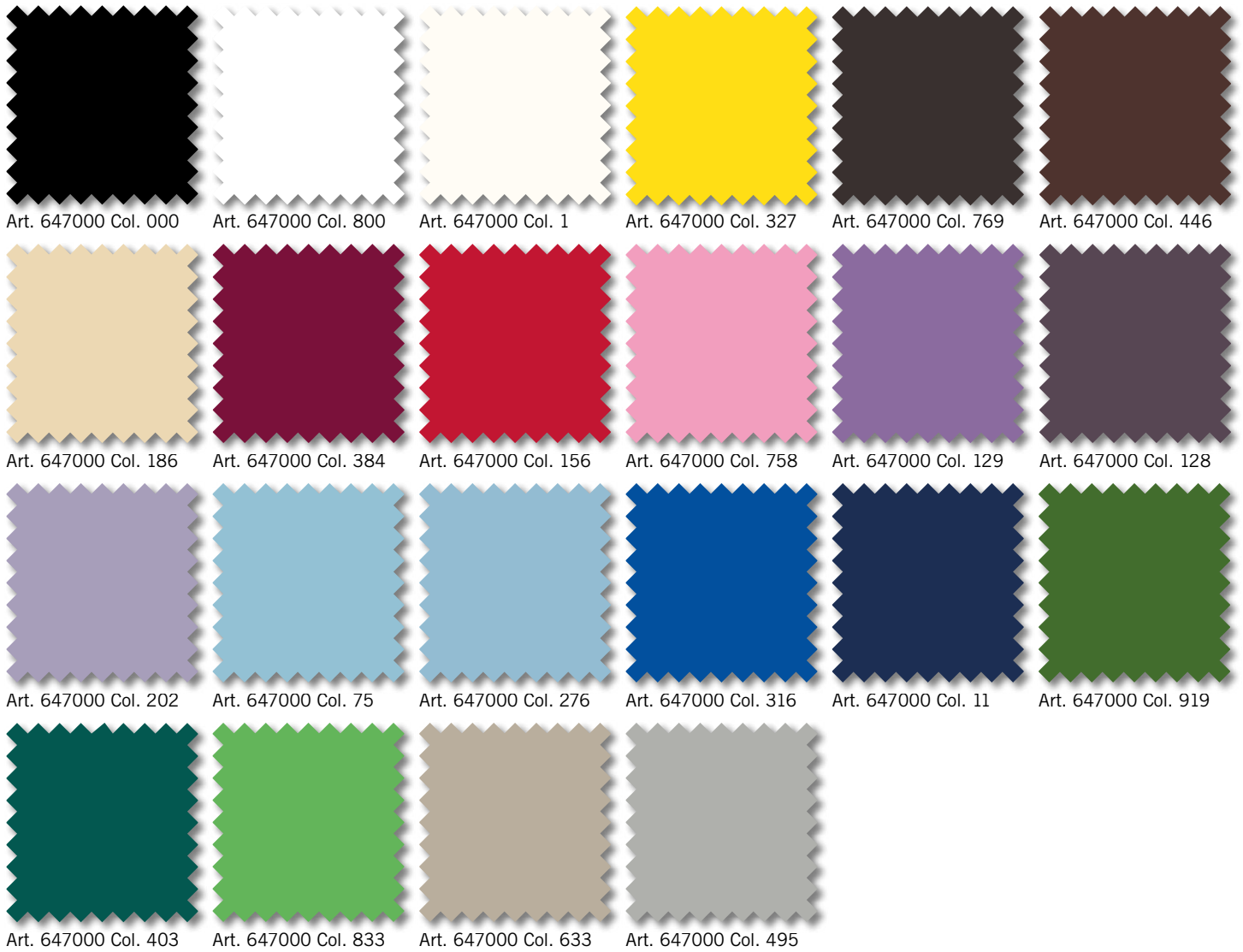


Art. 647781 Col. 339



Art. 647786 Col. 339

# Collection PURE COLOURS



**Liefereinheit / Delivery unit** 1 Meter  
**Mindestbestellmenge / Minimum order quantity** 6 Meter  
**Lauflänge Stoffballen / Bolt Size** 6 Meter  
**Breite / Width** 145 cm  
**Gewicht / Weight** 140 g/qm / 140 g/sqm

**Material / Material** 100 % Baumwolle / 100 % Cotton  
**Pflege / Care**   
**Zertifikat / Certificate** Oeko-Tex Standard 100  
**Herkunft / Origin** Made in Republic of Korea/Turkey/Pakistan  
 Kleine Farbabweichungen vorbehalten.  
 Small shade variations may occur.



Eine moderne Kombination aus edlem Unistoff und einzigartigem Blumen-Print machen diesen Mix so besonders.

*A modern combination of elegant plain fabric and unique floral prints make this mix something really special.*