

Anchor[®]



Tunic



AnchorCrafts.com

   @anchorcrafting

Designed by Natalie Spiteri

Design No.: 0060020-00901-05

MEZ Needlecraft GmbH, 2019. All Rights Reserved.



0060020-00901-05 Tunic

Anchor Metallic No. 4716000- # (Colour n°)



8(9) x #342
1 x #316



1 x N° 2.5 mm
(UK 13 – 12)



Sizes 36 – 38 (S). The figures for size 40/42 (M) are given in parentheses. If only one figure is given, it applies for all sizes.

Crochet



Intermediate



Tunic

MATERIALS

60 faceted glass beads, irides-cent purple 4 mm (Rayher art. 14 200820);
1 Anchor chain fastener, 8 mm (a generous 1/4 inch) matt black, 1 tube
2-component glue to attach the fastener

GENERAL INSTRUCTIONS

Work each project following the corresponding CC and instructions. For the meanings of crochet symbols, see the key. Stitches marked over ch are to be worked aro-und the ch-arch.

Rounds which are not shown entirely in the CC should be completed in pattern. Arrows in the CC mark points where two or more crocheted motifs are joined or indicate the direction of work. Changes from standard crochet procedure are explained in the instruction texts. Otherwise, work following the CC, which are labeled with numbers as given in the instructions.

TENSION GAUGE

8 arcs and 15 rows = 10 x 10 cm (4 x 4 inches)

FRONT AND BACK:

With colour 342, crochet 128 ch (144 ch = 1 pattern repeat more) + 2 ch. Work front and back in one piece, foll CC. For size 40/42, rep rows 5 – 10, rows 37 – 42, and rows 68 + 69 once.

Block piece, dampen, and let dry.

With colour 316, join new yarn at C and D and work lace on front and back.

FINISHING

Sew side seams, leaving a 15 cm

(6 inch) long slit open at lower edge of each side seam. With colour 316, crochet over edges of slits foll illus. E and over armhole edges, foll illus F. Foll illus F, crochet each strap to desired length and join to back.

BLOCKING

After crocheting, block each piece on a dry surface – preferably on a grid-ded interfacing, and with rust-proof pins – and dampen evenly with a laun-dry sprayer. Do not unpin the piece until it has dried completely.

To make sure your work looks like our original, use the Coats yarns as rec-ommended.

Fabrics may shrink during the first wash. For this reason, we recommend washing fabrics before cutting them as given in the instructions. The given measurements apply to washed fabric. Allow for shrinkage when purchas-ing fabric. The measurements of all fabric pieces include 1 cm (3/8 inch) seam allowances.

WASHING INSTRUCTIONS

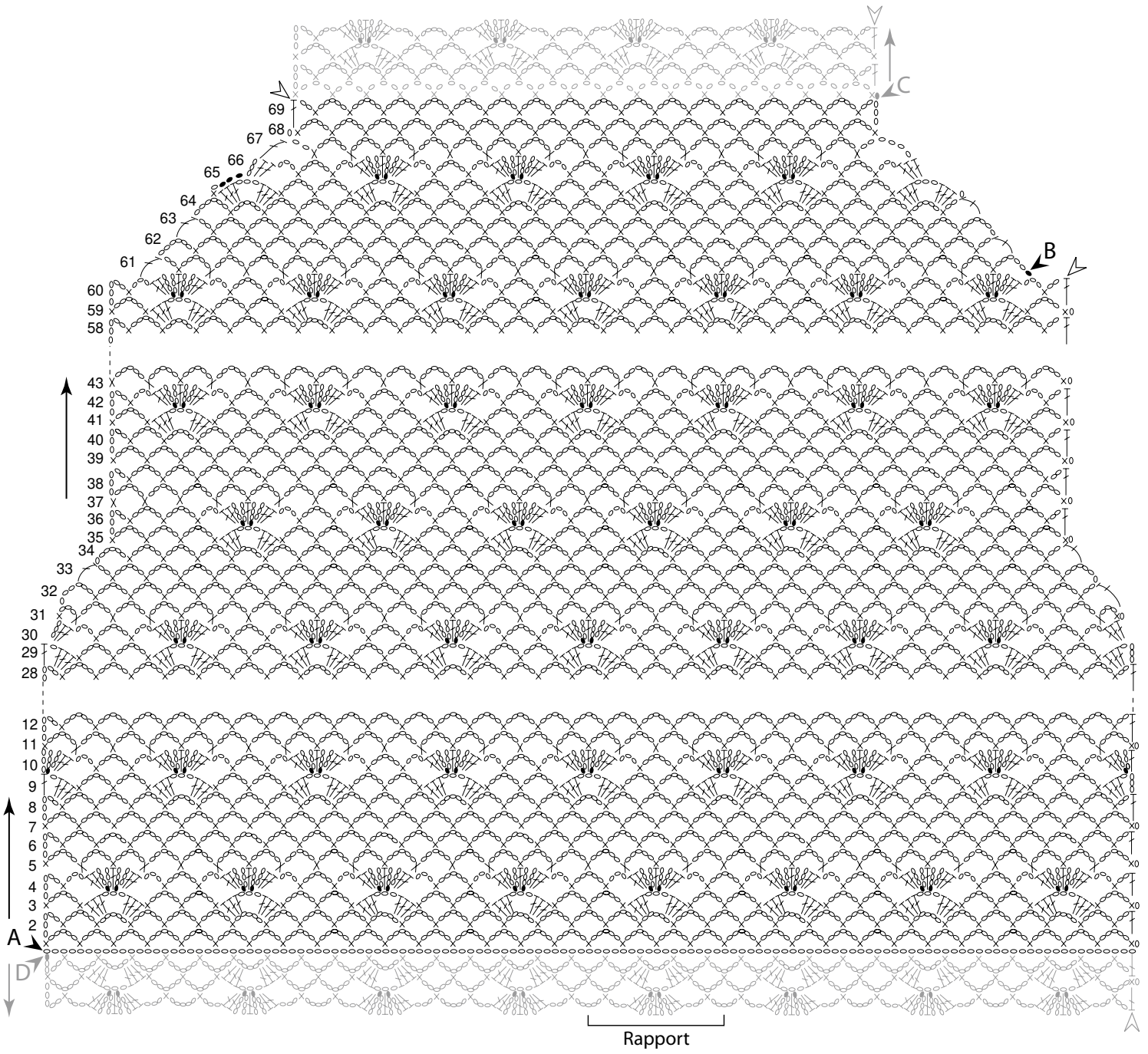
All our threads are produced in accordance with Oeko-tex standards. PH val-ues are tested and all our colors dye lots adhere to Global fastness standards. However, it is important to follow our thread washing instructions. Particularly with dark colors, excess dye can remain on the thread. To minimize any po-tential bleeding of excess dyestuff it is important to wash the products in THE HOTTEST TEMPERATURE possible, in accordance with the specifications of the fabrics, and use a large amount of water. Please make sure that you also follow the fabric washing instructions. As a precaution, you can also use decolorating sheets that you can find in any supermarket.

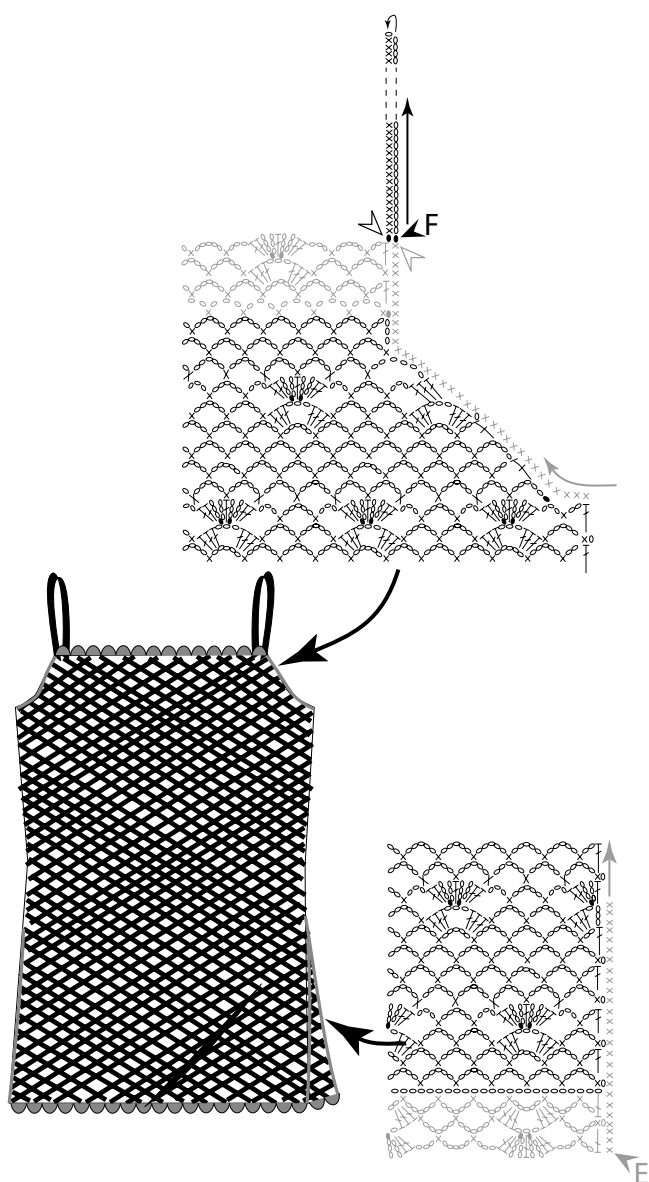
ABBREVIATIONS

alt = alternate(ly)
beg = begin(ning)
CC = crochet chart
ch = chain
cont = continue/continuous(ly)
dc = double crochet
dec = decrease (= crochet off 2 sts tog)
dtr = double treble
foll = follow(s/ing)
rem = remain(ing)
rep = repeat
rnd(s) = round(s)
slst = slip stitch
st(s) = stitch(es)
tog = together
tr = treble
yo = yarn over
yrh = yarn round hook

If symbols meet in a point at the top, the corresponding sts are to be cro-cheted off tog.

If symbols meet in a point at the bottom, the corresponding sts are to be worked in the same insertion point.





KEY TO CROCHET SYMBOLS

- begin
- end
- 1 slst = (slip stitch)
- 1 ch = (chain)
- × 1 dc = (double crochet)
- ┘ 1 htr (half treble)
- ┘ 1 tr (treble)
- ┘ 1 dtr (double treble)
- ┘ 1 dtr in the 1st crocheting-off loop of ttr in preceding rnd
- ┘ 1 ttr (triple treble)
- ┘ 1 ttr in the ch or in the 1st crocheting-off loop of ttr in preceding rnd
- ┘ 1 small forked tr (from one ttr, crochet off 2 loops 2x, 1 dtr, at the intersection point, crochet off 3 loops 1x and then 2 loops 1x)
- ┘ 1 large forked tr (work 1 quadruple tr, from this first crochet off 2 loops 2x, then work 1 dtr, and crochet off 3 loops 2x and then 2 loops 1x)
- ┘ 1 relief tr behind the work (1 yrh, insert hook from back and from right to left around the corresponding st-loop, and work one normal tr)
- ┘ crochet off 1 quintuple tr tog with 2 ttr, working the ttr in the 2nd crocheting-off loop of the quintuple tr
- ┘ work 3 ttr in one insertion point and crochet off tog
- ┘ crochet off each of 1 quintuple tr, quadruple tr, ttr, dtr, and 2 tr to the last loop, then crochet off loops in pairs, with 1 yrh each time
- * Joining points
- △ 1 picot (= 3 ch, then 1 slst back in the 1st ch)
- ⊗ 1 Pikot (= 4 ch, then 1 dc back in the 1st ch)
- ←● instead of the ch, work 1 slst in the opposing ch-arc of the adjacent motif
- thread ring

